



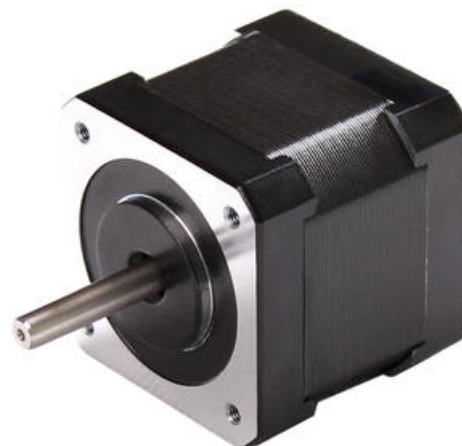
## FULLING 2 PHASE HYBRID STEP MOTOR 42X42 MM 1.8°

FL42STH25-0404UEN

FL42STH25-0404B-UEN prep. for E5 enc.



- High torque
- Customised winding or shaft
- Option with encoder and gear
- Long service life
- Nema 17



### PRODUCT DESCRIPTION

Fulling Motor Company is a leading motor manufacturer from Changzhou city in China.

Offering hybrid stepper and brushless DC motors, they have an annual capability in excess of 1.5 million pieces.

Used around the world in many different and varied applications, the Fulling Motor Company is committed to quality and service.

### TECHNICAL DATA

Front size	42x42
Holding torque	0,1667 Nm
Inductance	30 mH
Length	25 mm
Moment of inertia	20 g.cm <sup>2</sup>
Phase current	0,4 A
Resistance	24 Ω
Step angle	1,8 °
Weight	0,15 kg

